



Original Saw Company
465 Third Ave SE
Britt, IA 50423 USA

PH 641-843-3868
800-733-4063

customerservice@originalsaw.com
www.originalsaw.com

Parts Breakdown

RADIAL ARM SAW

TYPE 5 - without rip attachments

14" models 3531-01, 3536-01, 3531-03, 3536-03

16" models 3541, 3546

**For Serial number 20191203790 forward
(December 2019)**

MADE IN USA

INDEX

| | | | |
|---|-------|---|-------|
| General Safety Precautions/Specifications | 3-4 | Parts Diagram and Listings | 15-23 |
| Unpacking and Assembly. | 4-6 | Setting Thermal Overload Relay/Changing Voltage | 24-25 |
| Operating Cautions/Alternative Setup | 7 | Troubleshooting. | 26-28 |
| Operating Instructions. | 8-10 | Accessories/Preventive Maintenance. | 29 |
| Adjustments and Alignments. | 11-14 | Warranty Information/Factory Service | 30 |

General Rules for Safe Operation of Power Tools

1. KNOW YOUR POWER TOOL— Read the owner’s manual carefully. Learn the applications and limitations as well as the specific potential hazards of the tool.
2. GROUND ALL TOOLS.
3. KEEP GUARDS IN PLACE. Keep guards in working order.
4. KEEP WORK AREA CLEAN. Cluttered areas and benches invite accidents.
5. AVOID DANGEROUS ENVIRONMENTS. Don’t use power tools in damp or wet locations. Keep work area well lit.
6. KEEP CHILDREN AWAY. All visitors should keep a safe distance from the work area.
7. DON’T FORCE TOOL. The tool will do a better job if used at its designed rate.
8. WEAR PROPER APPAREL. Loose clothing, gloves or jewelry may get caught in moving parts. Rubber footwear is recommended when working outdoors.
9. USE PROTECTIVE GLASSES. If operation is dusty also wear a dust mask.
10. DON’T OVERREACH. Keep proper balance and footing at all times.
11. MAINTAIN TOOLS WITH CARE. Tools kept sharp and clean provide the best and safest performance. Follow instructions for lubricating and changing accessories.
12. DISCONNECT TOOLS FROM POWER SOURCE. When not in use, before servicing, when changing accessories, blades, or cutters the tool should be disconnected and locked out.
13. REMOVE ADJUSTING KEYS AND WRENCHES. Make it a habit to ensure keys and adjusting wrenches are removed prior to starting tool.
14. USE RECOMMENDED ACCESSORIES. Consult your distributor or the Original Saw Company for recommended accessories. Using improper accessories may cause hazards.
15. SECURE YOUR WORK. Use clamps or a vise to hold work when practical.
16. NEVER LEAVE TOOL RUNNING WHILE UNATTENDED.
17. ONE OPERATOR ONLY. The person who pulls the saw should position the work.
18. DO NOT REMOVE SMALL SCRAPS FROM THE TABLE WITH YOUR FINGERS.

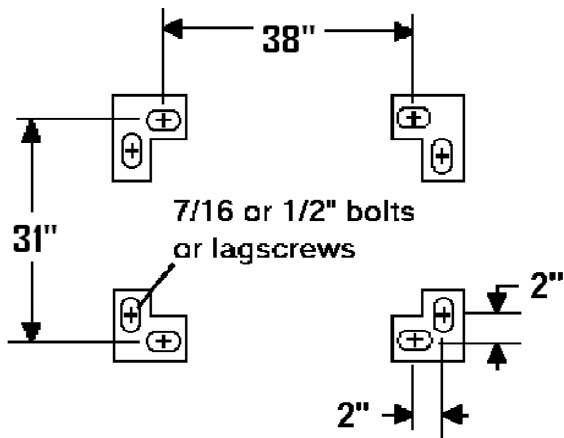
!!! CAUTION !!!

BOTH UPPER AND LOWER GUARDS MUST REMAIN IN PLACE FOR SAFE CUTTING OPERATION.

This manual is not totally comprehensive. It does not and cannot cover every possible safety and operational factor which may arise during the life of the machine.

| MODEL: | 3531-01 | 3531-03 | 3536-01 | 3536-03 | 3541 | 3546 |
|--|------------------|------------------|------------------|------------------|-------------------|-------------------|
| Arm | Standard | Standard | Medium | Medium | Standard | Medium |
| Blade Size | 14" / 350 mm | 14" / 350 mm | 14" / 350 mm | 14" / 350 mm | 16" / 400mm | 16" / 400mm |
| MOTOR: ALL MOTORS TOTALLY ENCLOSED FAN COOLED | | | | | | |
| HP | 3 | 5 | 3 | 5 | 5 | 5 |
| Phase | 1 | 3 | 1 | 3 | 3 | 3 |
| Hertz | 60 | 50/60 | 60 | 50/60 | 50/60 | 50/60 |
| Volts * | 230 | 208/230/460 | 230 | 208/230/460 | 208/230/460 | 208/230/460 |
| Brake | automatic | automatic | automatic | automatic | automatic | automatic |
| Arbor | 1" x 2 3/16" | 1" x 2 3/16" | 1" x 2 3/16" | 1" x 2 3/16" | 1" x 2 3/16" | 1" x 2 3/16" |
| CAPACITIES: inches / metric | | | | | | |
| Maximum Out-Rip | 29.875 / 758 mm | 29.875 / 758 mm | 37 7/8 / 962 mm | 37 7/8 / 962 mm | 29.875 / 758 mm | 37 7/8 / 962 mm |
| Max Cross Cut 1" Stock | 16" / 406 mm | 16" / 406 mm | 24" / 609 mm | 24" / 609 mm | 16" / 406 mm | 24" / 609 mm |
| Max Miter 45° 1" Stock | 10 7/8" / 276 mm | 10 7/8" / 276 mm | 15 1/2" / 393 mm | 15 1/2" / 393 mm | 10 7/8" / 276 mm | 15 1/2" / 393 mm |
| Max Depth of Cut | 4 1/8" / 104 mm | 4 1/8" / 104 mm | 4 1/8" / 104 mm | 4 1/8" / 104 mm | 4 15/16" / 125 mm | 4 15/16" / 125 mm |
| Max Depth of Cut 45° Bevel | 1 3/4" / 44 mm | 1 3/4" / 44 mm | 1 3/4" / 44 mm | 1 3/4" / 44 mm | 2" / 50 mm | 2" / 50 mm |

⊕ 1 1/4" x 5/8" slot



FLOOR MOUNTING DIMENSIONS

Your saw may be mounted to the floor. Use the diagram at right to assist you in placing the saw and fastening it to the floor.

Unpacking and Attaching the Table Legs

Your Original Radial Arm Saw has been completely assembled, tested and then partially disassembled. The box included in your shipment contains the following items necessary for assembly of your saw:

| | | | | | | | |
|------------------|----|--------------------|---|-------------------------|----|--------------|----|
| Legs | 4 | Magnetic Starter | 1 | 3/8" Flanged Cap Screws | 16 | 3/8" Hex Nut | 16 |
| 3/8" Lock washer | 16 | Allen Arbor Wrench | 1 | Flat Arbor Wrench | 1 | | |

The machine can be lifted with a forklift under the steel saw frame. A sling or chain hoist may be used under the arm ONLY if placed at the rear of the arm near the column. Attach the legs using the 3/8" hex head cap screws, lock washers and nuts provided in the hardware bag. Tighten cap screws securely after the machine has been lowered onto its legs.

Important

All cable lengths have been adjusted during manufacture to allow for proper movement of the arm and roller head. However, you should check the cables to ensure full range of movement. If adjustment is necessary, loosen the 2 cable clamps (1 inside of arm, 1 at right rear of arm) and adjust the cables so roller head is free to travel the total length of the arm with the motor pivoted in the roller head so the blade is on the right hand side. Also, check to ensure there is enough slack in the cables between the rear of the arm and the starter enclosure so the arm can be swung to the right a full 90° while the arm is elevated to its highest position.

Electrical Connection—



Recommend Copper Wire Sizes (A.W.G.)

To obtain maximum efficiency from your saw motor, the feeder wire from the power source to the machine should comply with the table below.



Note: Always check arbor shaft rotation before installing blade, arbor nuts, or collars.

Wire sizes in this chart are the result of high start up amps.

Recommended Copper Wire Sizes

| | 1 Phase | 3 Phase | 3 Phase | 3 Phase |
|---|-----------|-----------|-----------|-----------|
| <u>Up to 60' from power supply</u> | 200-240 V | 200-240 V | 440-480 V | 550-600 V |
| 3 hp | #8 AWG | #8 AWG | #10 AWG | #10 AWG |
| 5 hp | #8 AWG | #8 AWG | #10 AWG | #12 AWG |
| 7.5 hp | N/A | #8 AWG | #8 AWG | #10 AWG |

| | 200-240 V | 200-240 V | 440-480 V | 550-600 V |
|---|-----------|-----------|-----------|-----------|
| <u>60 - 100' From power supply</u> | 200-240 V | 200-240 V | 440-480 V | 550-600 V |
| 3 hp | #8 AWG | #8 AWG | #8 AWG | #10 AWG |
| 5 hp | #2 AWG | #8 AWG | #8 AWG | #8 AWG |
| 7.5 hp | N/A | #4 AWG | #8 AWG | #8 AWG |

| | 200-240 V | 200-240 V | 440-480 V | 550-600 V |
|--|-----------|-----------|-----------|-----------|
| <u>100 - 160' From power supply</u> | 200-240 V | 200-240 V | 440-480 V | 550-600 V |
| 3 hp | #4 AWG | #4 AWG | #8 AWG | #8 AWG |
| 5 hp | #0 AWG | #2 AWG | #8 AWG | #8 AWG |
| 7.5 hp | N/A | #2 AWG | #4 AWG | #8 AWG |

| | 200-240 V | 200-240 V | 440-480 V | 550-600 V |
|---|-----------|-----------|-----------|-----------|
| <u>Over 160' From power supply</u> | 200-240 V | 200-240 V | 440-480 V | 550-600 V |
| 3 hp | #2 AWG | #2 AWG | #4 AWG | #4 AWG |
| 5 hp | #00 AWG | #2 AWG | #2 AWG | #4 AWG |
| 7.5 hp | N/A | #0 AWG | #2 AWG | #2 AWG |



Note: Wire too large to insert into the provided magnetic starter will need to be terminated in a fused disconnect and #10 wire ran into the magnetic starter using less than 10 feet of cable.

Recommended Fuse / Breaker Size

(Located in the disconnect enclosure)

| | 1 Phase | 3 Phase | 3 Phase | 3 Phase |
|--------|-----------|-----------|-----------|-----------|
| | 200-240 V | 200-240 V | 440-480 V | 550-600 V |
| 3 hp | 60 AMP | 20 AMP | 20 AMP | 20 AMP |
| 5 hp | 90 AMP | 30 AMP | 20 AMP | 20 AMP |
| 7.5 hp | N/A | 45 AMP | 20 AMP | 20 AMP |

General Safety Precautions

1. Be sure the blade rotates clockwise when facing the saw from the left side. Blade must rotate to the front of the saw.
2. Be sure all clamp handles are tight before turning on motor.
3. Keep the blade sharp and properly set.
4. Hold or clamp the material firmly against the guide strip when cutting.
5. Be sure the blade and arbor collars are clean and the recessed side of the collars are against blade.
6. Never oil or grease arm tracks or motor.
7. Do not start machine without proper tool guard.
8. Do not remove the anti-kickback device from the blade guard. Adjust it to just clear the work.
9. Keep motor air slots clean.
10. Return roller head to full rear after each operation.

General Cautions When Using the Lower Blade Guard:

1. Used properly the lower blade guard is designed to provide protection from contact with the side of the blade. It is not designed to prevent contact with the front or rear of the blade. When the lower guard contacts the fence or material being cut it will rise up and expose the blade. Be careful to keep your hands out of the line of the cut.
2. Lower blade guards may become caught in prior kerfs in the fence or table. Alleviate this by replacing the guide fence frequently. Always stop the saw before attempting to remove a guard that is stuck in a kerf.
3. Short cut-off pieces of wood may become caught between the lower guard and the blade. If this happens shut off the saw and wait until blade stops to remove the piece.
4. The lower blade guard's effectiveness is limited in bevel operations. It may have to be raised out of the way when setting the bevel angle. **Be sure the power is off/locked out and blade is completely stopped before making any adjustment.**
5. Catching the lower guard in saw kerfs when changing the saw setup can be avoided by elevating the saw until the bottom of the guard clears the fence.
6. When ripping narrow strips the lower guard may have to be raised to rest on top of the guide fence. Be sure to use a pusher stick to feed the work.
7. Do not use the lower guard with any accessory other than the correct size blade.

Using the Adjustable Arm Stop

The arm stop should be used whenever roller head travel needs to be limited, such as when repetitive cross cuts are being made. Use of the arm stop will also prevent the blade from throwing small cut off pieces on the return stroke. **Do not adjust the arm stop unless the power is off and locked out and the blade stopped. The arm stop must be used on the right side of the arm.** Proper adjustment of the arm stop is completed as follows:

1. Pull the roller head forward far enough for the blade to sever the material and travel 1/4" past the material.
2. Lock the roller head to the arm with the riplock and place the arm stop so it is touching the roller head.
3. Loosen the riplock and return the roller head behind the fence.

Alternate Guide Strip Positions

Your saw was assembled with the guide strip in the most frequently used position on the work table (see figure 3). The guide strip may be moved to alternate positions to accommodate varying uses. Moving the guide strip behind the spacer board will allow for maximum cross cutting capabilities. Moving the guide strip back to the rear board will provide for maximum ripping capability.

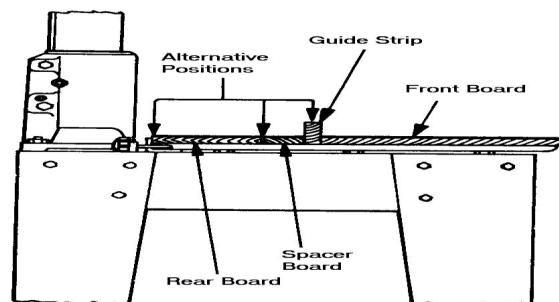


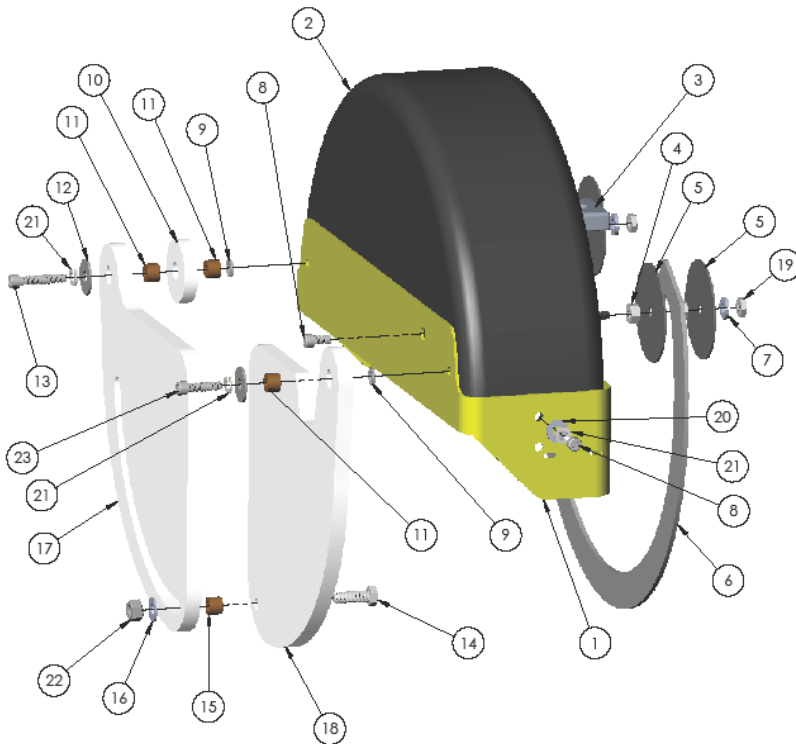
Figure 3

Parts List and Ordering Instructions

Order only genuine replacement parts from your Original Saw Company Dealer.

When ordering parts be sure to include:

- Name of manufacturer—Original Saw Company
- Complete machine identification data found on name plate on front of frame
- Complete motor identification from motor name plate
- Quantity, part number and description of parts required
- Complete shipping and billing instructions



| ITEM NO. | PART NUMBER | DESCRIPTION | QTY. |
|----------|-------------|------------------------------|------|
| 1 | 096614-04 | SKIRT, BLADE GUARD 14" | 1 |
| 2 | 096614-02 | GUARD BODY, 14" | 1 |
| 3 | 096694 | Guard Mount Bracket | 1 |
| 4 | 099370-04 | 5/16"-18 HEX NUT | 4 |
| 5 | 400720 | BLADE GUARD RETAINER 12" | 4 |
| 6 | 096798-00 | RING, 14" GUARD | 1 |
| 7 | 099384-07 | 5/16" LOCK WASHER | 2 |
| 8 | 099154-08 | 1/4-20X1/2 SHCS | 3 |
| 9 | 096803-22 | POLY WASHER, 1/4 | 2 |
| 10 | 096614-07 | GUARD BLADE SPACER 12" | 1 |
| 11 | 096803-04 | BUSHING, .25ID X .50OD | 3 |
| 12 | 099361-18 | Flat Washer 1/4 x 1" zinc | 2 |
| 13 | 0996154-22 | 1/4-20X13/8 SHCS | 1 |
| 14 | 082104-02 | 5/16"-18 x 1 1/4" HEX BOLT | 1 |
| 15 | 096803-02 | 5/16" BRASS BUSHING | 1 |
| 16 | 099361-16 | 5/16" FLAT WASHER | 1 |
| 17 | 096614-10 | GUARD, BLADE, REAR 12" | 1 |
| 18 | 096614-11 | GUARD, BLADE, FRT 12" | 1 |
| 19 | 099364-04 | 5/16"-18 HEX NUT | 2 |
| 20 | 046084-00 | 1/4" FLAT WASHER | 2 |
| 21 | 91102A750 | Wshr. 1/4 Lock ZP | 4 |
| 22 | 082024-02 | Nut, 5/16-18 Elastic Stop ZP | 1 |
| 23 | 082190 | Scr 1/4-20 x 1 SHCS Black | 1 |

035014-10

14" Guard Assembly, Complete type 5 no rip attachments

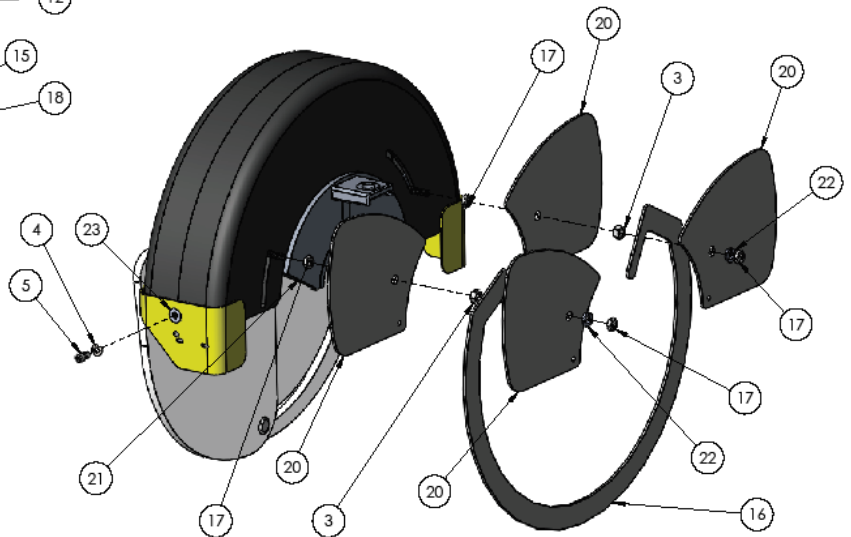
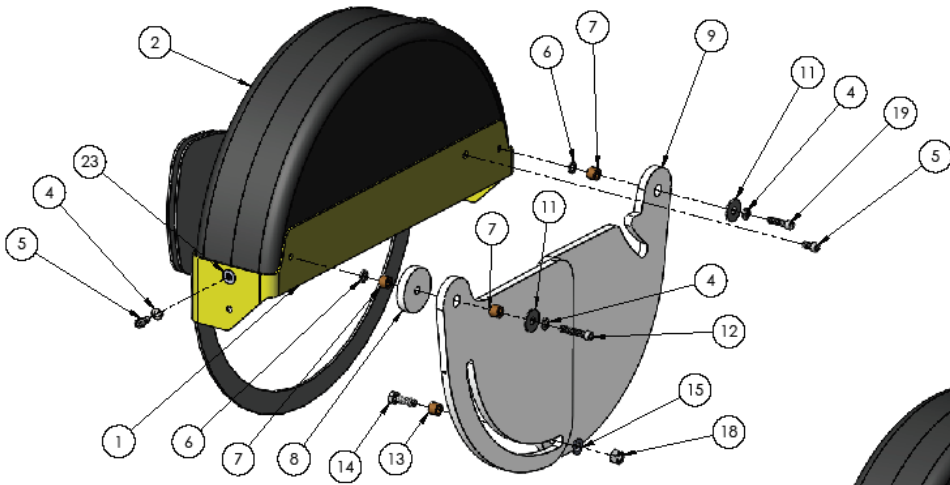


Parts List and Ordering Instructions

Order only genuine replacement parts from your Original Saw Company Dealer.

When ordering parts be sure to include:

- Name of manufacturer—Original Saw Company
- Complete machine identification data found on name plate on front of frame
- Complete motor identification from motor name plate
- Quantity, part number and description of parts required
- Complete shipping and billing instructions



| ITEM NO. | PART NUMBER | DESCRIPTION | QTY. |
|----------|-------------|------------------------------|------|
| 1 | 123496-04 | SKIRT, BLADE GUARD 16" | 1 |
| 2 | 123496-02 | GUARD BODY, 16" | 1 |
| 3 | 099370-04 | 5/16"-18 HEX NUT | 2 |
| 4 | 084173 | Wshr. 1/4 Lock ZP | 4 |
| 5 | 080588-00 | 1/4"-20 x 1/2" SHCS | 3 |
| 6 | 096803-22 | POLY WASHER, 1/4 | 2 |
| 7 | 096803-04 | BUSHING, .25ID X .50OD | 3 |
| 8 | 123496-07 | GUARD BLADE SPACER 16" | 1 |
| 9 | 123496-11 | GUARD, BLADE, FRT 16" | 1 |
| 10 | 123496-10 | GUARD, BLADE, REAR 16" | 1 |
| 11 | 080457 | Flat Washer 1/4 x 1" zinc | 2 |
| 12 | 099154-22 | 1/4-20X13/8 SHCS | 1 |
| 13 | 096803-02 | 5/16" BRASS BUSHING | 1 |
| 14 | 082104-02 | 5/16"-18 x 1 1/4" HEX BOLT | 1 |
| 15 | 099361-16 | 5/16" FLAT WASHER | 1 |
| 16 | 123494-00 | 16" Lower Guard Ring | 1 |
| 17 | 099364-04 | 5/16"-18 HEX NUT | 4 |
| 18 | 082024-02 | Nut, 5/16-18 Elastic Stop ZP | 1 |
| 19 | 082190 | Scr 1/4-20 x 1 SHCS Black | 1 |
| 20 | 123493-00 | 16" Guard Retainer | 4 |
| 21 | 096694 | Guard Mount Bracket | 1 |
| 22 | 099384-07 | 5/16" LOCK WASHER | 2 |
| 23 | 046084-00 | 1/4" FLAT WASHER | 2 |

035016-10

16" Guard Assembly, Complete type 5 no rip attachments

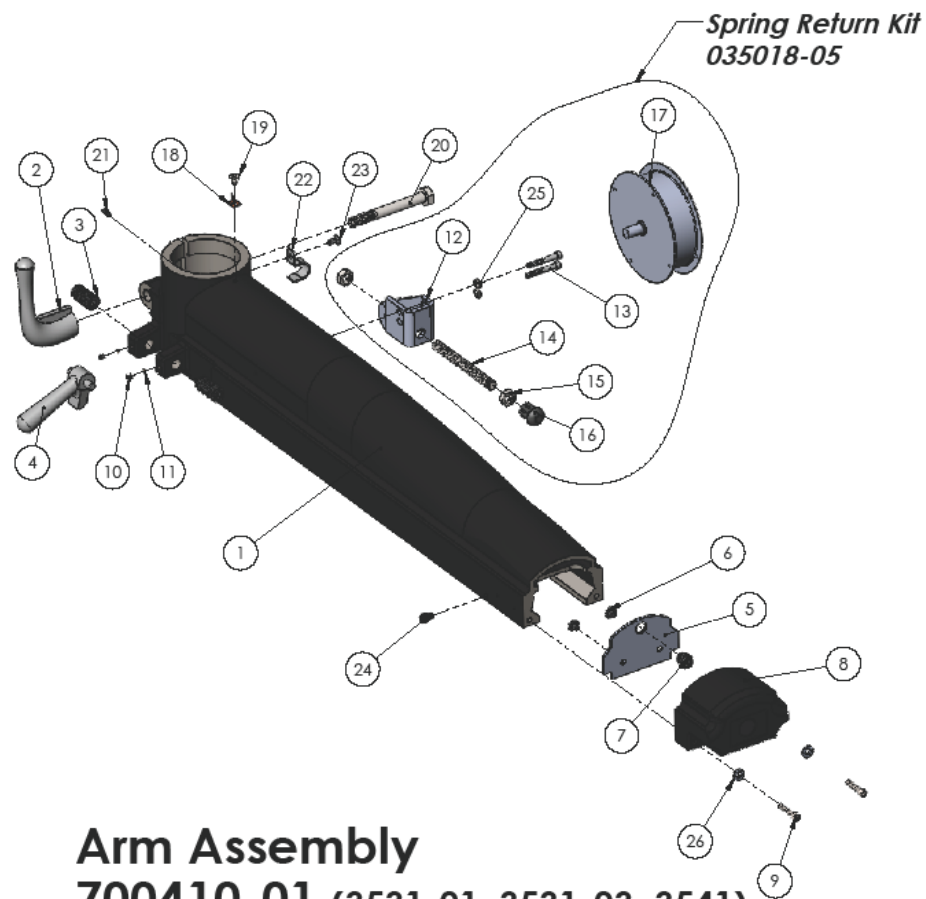
Parts List and Ordering Instructions

Order only genuine replacement parts from your Original Saw Company Dealer.

When ordering parts be sure to include:

- Name of manufacturer—Original Saw Company
- Complete machine identification data found on name plate on front of frame
- Complete motor identification from motor name plate
- Quantity, part number and description of parts required
- Complete shipping and billing instructions

| ITEM NO. | PART NUMBER | DESCRIPTION | QTY. |
|----------|-------------|-------------------------------------|------|
| 1 | 123518-00 | 32" HD Arm (Std) | 1 |
| | 123518-01 | 40" HD Arm (Med) | |
| 2 | 083294 | HD Arm Clamp Handle | 1 |
| 3 | 083122 | Miter Latch Screw | 2 |
| 4 | 096767 | HD Miter Latch | 1 |
| 5 | 088183-01 | HD Dust Cover w/ bumper holes | 1 |
| 6 | 070869 | Bumper | 2 |
| 7 | 048822 | Strain Relief | 1 |
| 8 | 096728-02 | HD End Cap w/ single hole | 1 |
| 9 | 082190 | 1/4-20 x 1" Soc Hd Cap Scr | 2 |
| 10 | 082387 | Scr 1/4-20 x 1/4 SSCPPT Black | 2 |
| 11 | 083412 | 1/4" Set Screw Slug | 2 |
| 12 | 084962-01 | HD Bracket, Reel Mounting Type 2 | 1 |
| 13 | 099154-28 | 1/4-20 x 1 5/8 Soc Hd Cap Scr | 2 |
| 14 | 088186 | HD Bumper Stud Cut to Length | 1 |
| 15 | 099366-10 | HEX JAM NUT, 1/2-13 | 2 |
| 16 | 068653-01 | 1/2" Rod Bumper | 1 |
| 17 | 066212-00 | Spring Return | 1 |
| 18 | 203597-01 | Pointer | 1 |
| 19 | 080489 | PHPS, 1/4-20 X 3/8 | 1 |
| 20 | 096771-01 | Arm Clamp Bolt | 1 |
| 21 | 080648 | 1/4-20 x 1/2 Cup Pt Set Screw | 1 |
| 22 | 81778 | Cable Clamp | 1 |
| 23 | 080634 | Scr 1/4-20 x 1/2 Rd.Hd.Sltd.Mach.ZP | 1 |
| 24 | 082200 | Scr 5/16 x 3/8 SHCS Black | 1 |
| 25 | 084173 | Wshr. 1/4 Lock ZP | 2 |
| 26 | 099384-07 | 5/16" LOCK WASHER | 2 |



Arm Assembly

700410-01 (3531-01, 3531-03, 3541)

700420-01 (3536-01, 3536-03, 3546)



Parts List and Ordering Instructions

Order only genuine replacement parts from your Original Saw Company Dealer.

When ordering parts be sure to include:

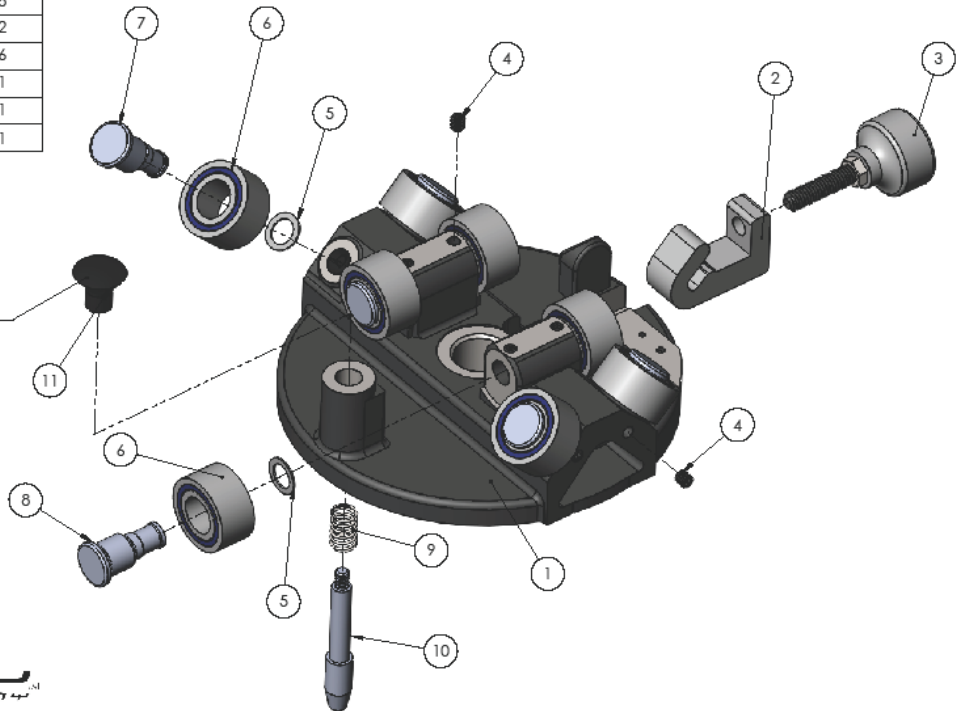
- Name of manufacturer—Original Saw Company
- Complete machine identification data found on name plate on front of frame
- Complete motor identification from motor name plate
- Quantity, part number and description of parts required
- Complete shipping and billing instructions

| ITEM NO. | PART NUMBER | DESCRIPTION | QTY. |
|----------|-------------|-----------------------------------|------|
| 1 | 96769 | HD Rollerhead | 1 |
| 2 | 096766 | Clamp Shoe Adj. Arm Stop | 1 |
| 3 | 68654-07 | Knob and stud assy - adj arm stop | 1 |
| 4 | 082387 | Scr 1/4-20 x 1/4 SSCPPT Black | 8 |
| 5 | 103422 | Bearing Shaft Washer | 8 |
| 6 | 081476-01 | Bearing | 8 |
| 7 | 096770 | Bearing Shaft - Eccentric | 2 |
| 8 | 116406 | Bearing Shaft - Concentric | 6 |
| 9 | 088165 | Locating Pin Spring | 1 |
| 10 | 119510 | Locating Pin | 1 |
| 11 | 069532-00 | Ball Knob | 1 |

HD Roller Head 700500-02



Included with Rip Kit



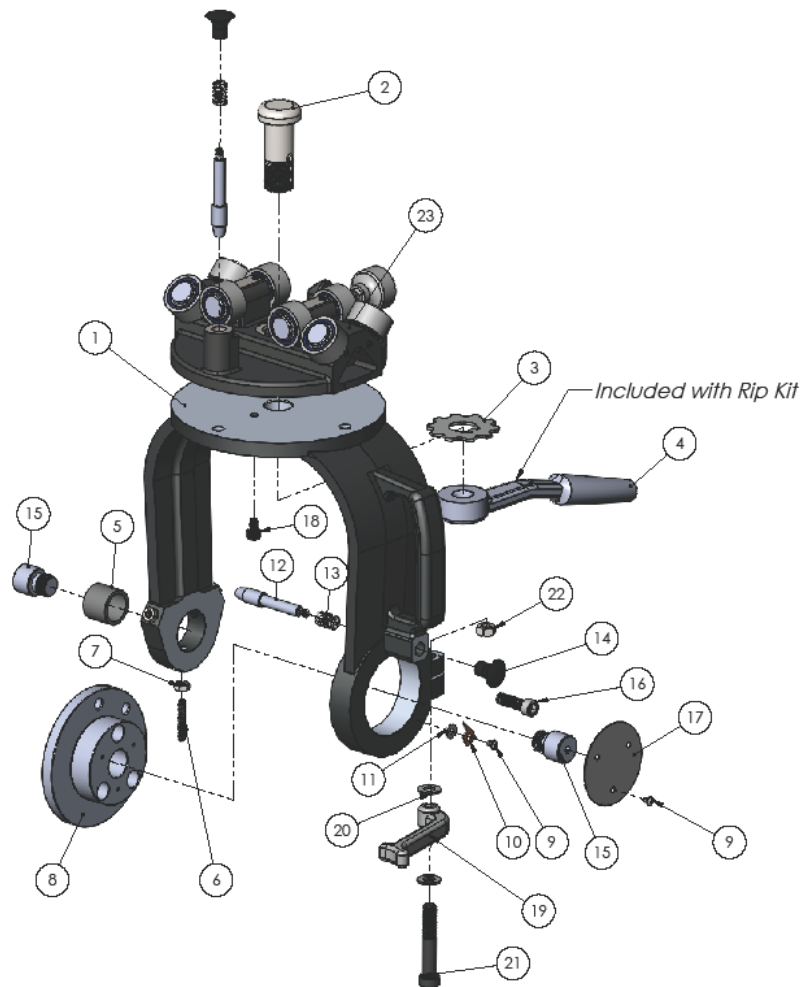
Parts List and Ordering Instructions

Order only genuine replacement parts from your Original Saw Company Dealer.

When ordering parts be sure to include:

- Name of manufacturer—Original Saw Company
- Complete machine identification data found on name plate on front of frame
- Complete motor identification from motor name plate
- Quantity, part number and description of parts required
- Complete shipping and billing instructions

| ITEM NO. | PART NUMBER | DESCRIPTION | QTY. |
|----------|-------------------------|---------------------------|------|
| 1 | 96737 | HD Yoke | 1 |
| 2 | 067927 | KING BOLT | 1 |
| 3 | 068655 | Adjuster Washer | 1 |
| 4 | 096774 | YOKE CLAMP HANDLE | 1 |
| 5 | 101122 | TRUNION BUSHING | 1 |
| 6 | 082403-00 | 1/4"-20 CP SET SCREW | 3 |
| 7 | 099364-04 | Nut 5/16-18 Hex Jam | 3 |
| 8 | 83356-01 | DIAL PLATE | 1 |
| 9 | 099262-04 | PHPS, 8-32 X 1/4 | 4 |
| 10 | 203588-01 | Pointer | 1 |
| 11 | 030251 | #10 flat washer | 1 |
| 12 | 119510 | Locating Pin | 1 |
| 13 | 088165 | Locating Pin Spring | 1 |
| 14 | 069532-00 | Ball Knob | 1 |
| 15 | 101121 | Trunion Stud | 2 |
| 16 | 082173-00 | 3/8"-16 x 1 1/4" SHCS | 3 |
| 17 | 101118 | HD Dial Logo Plate | 1 |
| 18 | 082200 | Scr 5/16 x 3/8 SHCS Black | 1 |
| 19 | 201361 | Bevel clamp handle | 1 |
| 20 | 080674 | 3/8" Flat Washer | 2 |
| 21 | 082182 | SHCS, 3/8-16 X 2 3/4 | 1 |
| 22 | 99370-07 | HEX NUT, 5/16-18 | 1 |
| 23 | HD Roller Head Assembly | SEE PAGE 10 | 1 |



HD Yoke Assembly 700300-03



Parts List and Ordering Instructions

Order only genuine replacement parts from your Original Saw Company Dealer.

When ordering parts be sure to include:

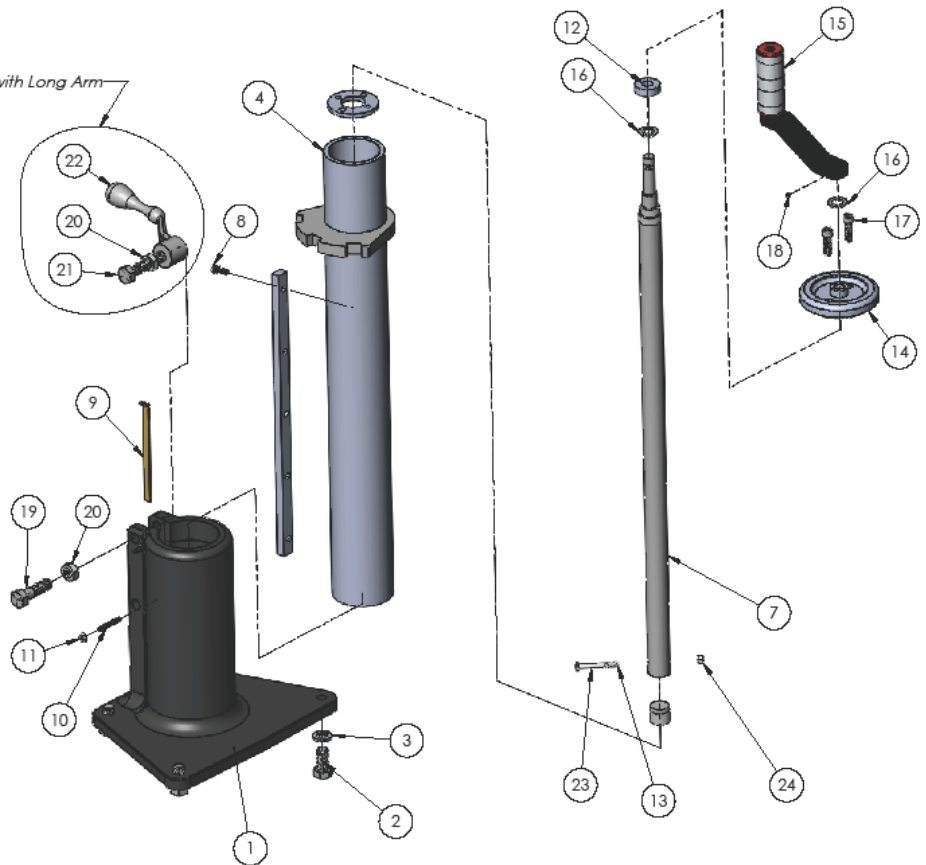
- Name of manufacturer—Original Saw Company
- Complete machine identification data found on name plate on front of frame
- Complete motor identification from motor name plate
- Quantity, part number and description of parts required
- Complete shipping and billing instructions

| ITEM NO. | PART NUMBER | DESCRIPTION | QTY. |
|----------|-------------|--------------------------------|------|
| 1 | 122332-01 | HD Base | 1 |
| 2 | 099174-01 | 5/8"-11 X 1 1/4" HEX HEAD BOLT | 4 |
| 3 | 080682-00 | 5/8 Lock Washer | 4 |
| 4 | 088166 | HD Column | 1 |
| 7 | 096742 | Elavating Assembly | 1 |
| 8 | 082205 | SHCS 5/16-18 X 5/8 | 6 |
| 9 | 121616-00 | HD & CD Gib | 1 |
| 10 | 096897-00 | 1/4"-20 x 1 3/4" CPSS | 2 |
| 11 | 099374-05 | 1/4"-20 HEX JAM NUT | 2 |
| 12 | 080501-00 | Thrust Bearing | 1 |
| 13 | 046084 | 1/4" WASHER | 1 |
| 14 | 121267-01 | HD THRUST CAP | 1 |
| 15 | 070964-03 | CRANK HANDLE ASM | 1 |
| 16 | 121451 | Special Washer | 2 |
| 17 | 082173-00 | 3/8"-16 x 1 1/4" SHCS | 2 |
| 18 | 096714 | 1/4-20 x 5/16 SET SCREW | 2 |
| 19 | 096722-01 | 5/8"-11 X 2 1/2" HEX HEAD BOLT | 1 |
| 20 | 081988-00 | 5/8"-11 HEX JAM NUT | 2 |
| 21 | 096722-02 | 5/8"-11 X 3 1/2" HEX HEAD BOLT | 1 |
| 22 | 103206 | HANDLE | 1 |
| 23 | 082023-02 | 1/4"-20 x 2 1/4" HEX BOLT | 1 |
| 24 | 082024-00 | 1/4"-20 LOCK NUT | 1 |

HD Base and Column Assembly

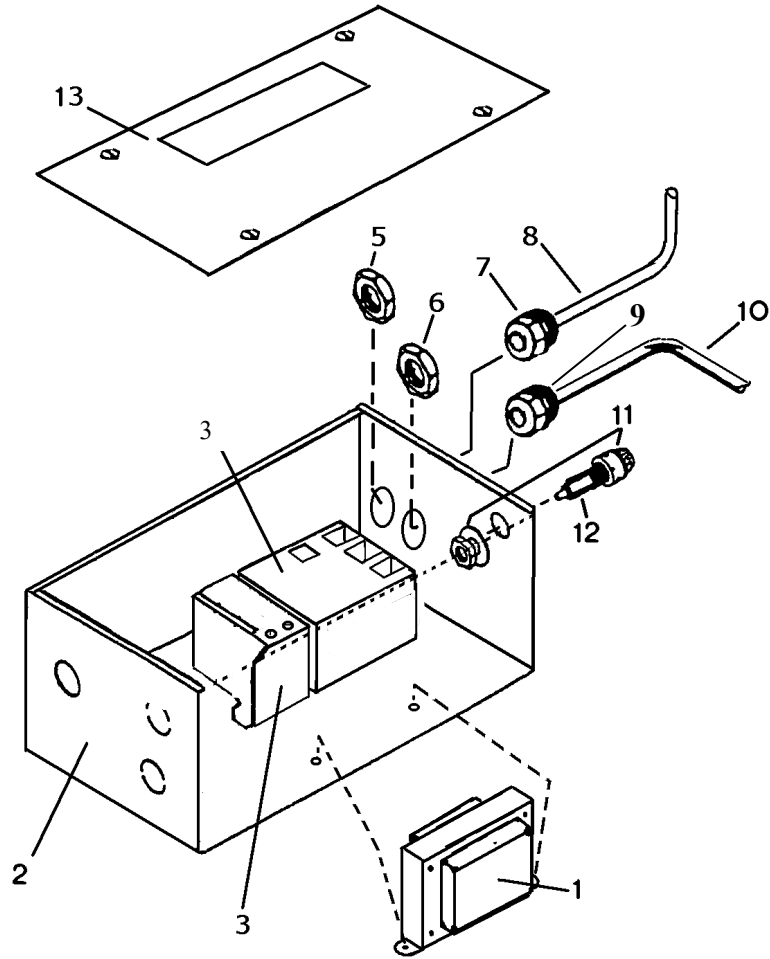


Included with Long Arm



Magnetic Starter Assembly

(Telemecanique Starter)



| Index No. | Description | Qty | 5 HP 3 Phase | 3 HP 1 Phase |
|-----------|---|-----|--------------------------|--|
| 1 | Transformer 208/230/460 volt 380/575 volt | 1 | 122105-60 122105-51 | 122105-60 n/a |
| 2 | Enclosure | 1 | 096759-04 | 096759-04 |
| 3 | Magnetic Starter | 1 | 122108-83 | 122108-83 |
| 4 | Heater Pack | 1 | | 122110-86 (18.7 setting) 122110-86 (17 setting) |
| | 208v 1 phase | | — | — |
| | 230v 1 phase | | — | — |
| | 208v 3 phase | | 122110-85 (16.7 setting) | — |
| | 230v 3 phase | | 122110-85 (15.2 setting) | — |
| | 460v 3 phase | | 122110-83 (7.6 setting) | — |
| 5 | Nylon nut 3/4 | 1 | 068820-02 | 068820-02 |
| 6 | Nylon nut 1/2 | 1 | 068820-03 | 068820-03 |
| 7 | Liquid tight fitting 3/4 | 1 | 081724-01 | 081724-01 |
| 8 | Motor cable | 9ft | 21703164 | 21703114 |
| 9 | Liquid tight fitting 1/2 | 1 | 066425-01 | 066425-01 |
| 10 | Control cable | 9ft | 21703338 | 21703338 |
| 11 | Fuse holder | 1 | 068723 | 068723 |
| 12 | Fuse | 1 | 081554 | 081554 |
| 13 | Warning Label | 1 | 123540 | 123540 |

Parts List and Ordering Instructions

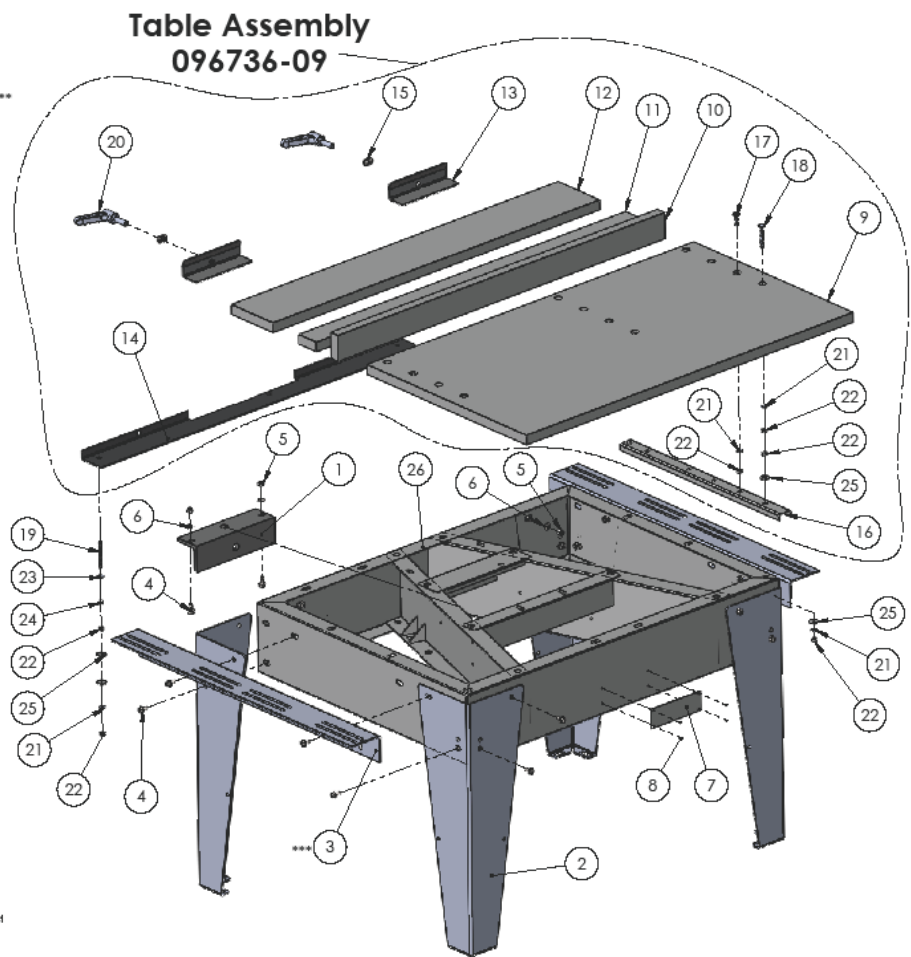
Order only genuine replacement parts from your Original Saw Company Dealer.

When ordering parts be sure to include:

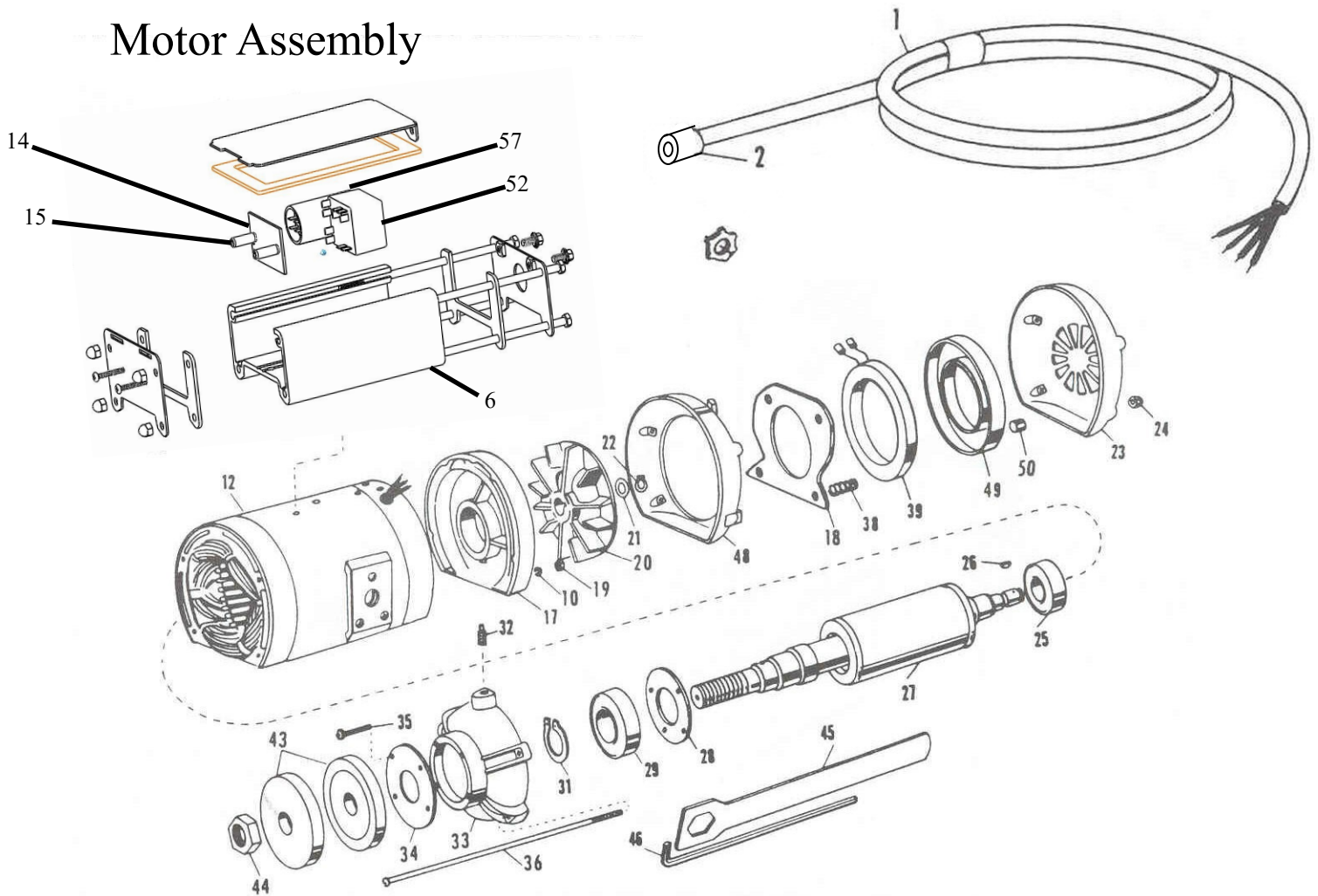
- Name of manufacturer—Original Saw Company
- Complete machine identification data found on name plate on front of frame
- Complete motor identification from motor name plate
- Quantity, part number and description of parts required
- Complete shipping and billing instructions

| ITEM NO. | PART NUMBER | DESCRIPTION | QTY. |
|----------|-------------|----------------------------|------|
| 1 | 088182-02 | LOWER ELEV. BRCKT | 1 |
| 2 | 088181-01 | HD/CD TABLE LEG | 4 |
| *** 3 | 084156-06 | EXTENSION TABLE BRACKETS | 2 |
| 4 | 082102 | 3/8-16 x 1 Hex Screw | 18 |
| 5 | 084180-00 | 3/8-16 Hex Nut | 18 |
| 6 | 000415 | LOCK WASHER, 3/8 | 18 |
| 7 | 123459 | Machine Name Plate | 1 |
| 8 | 012122 | DRIVE SCREW | 4 |
| 9 | 096730 | HD Front Table Board 25" | 1 |
| 10 | 096731 | HD Table Guide Strip | 1 |
| 11 | 096732 | HD Table Spacer Board | 1 |
| 12 | 096734-02 | HD Table Board Rear | 1 |
| 13 | 068666-05 | CLAMP, TABLE | 2 |
| 14 | 096729-04 | CLAMPING CLEAT, LARGE | 1 |
| 15 | 099065 | WELD NUT, 1/2-13 | 2 |
| 16 | 096735-02 | HD Table Cleat w standoff | 3 |
| 17 | 096779-01 | CRG BOLT, 5/16-18 X 1.25 | 6 |
| 18 | 096778-01 | CRG BOLT, 5/16-18 X 2.5 | 6 |
| 19 | 100155-44 | SET SCREW, 5/16-18 X 3 | 3 |
| 20 | 068706 | Knob;Clamping ratchet 1/2" | 2 |
| 21 | 099384-07 | 5/16" LOCK WASHER | 21 |
| 22 | 099370-04 | 5/16"-18 HEX NUT | 30 |
| 23 | 099361-16 | 5/16" FLAT WASHER | 3 |
| 24 | 099364-04 | 5/16"-18 HEX NUT | 3 |
| 25 | 099361-18 | Flat Washer 5/16 x 1" zinc | 18 |
| 26 | 088180 | HD FRAME | 1 |

*** OPTIONAL ***



Motor Assembly



| Index No. | Part No. | Description | Qty |
|-----------|-----------|------------------------------------|-----|
| 1 | 064540 | #14-4 motor cable | 1 |
| 2 | 081724-01 | Strain Relief—Liquid tight fitting | 1 |
| | 068820-02 | Nut—for strain relief | 1 |
| 4 | 123466-02 | motor data label 3 phase | 1 |
| | 123466-08 | motor data label 1 phase | 1 |
| 5 | | | |
| 6 | 088175-11 | Motor conduit Box Assembly | 1 |
| 7 | 000418 | #8 lock washer | 2 |
| 10 | 000417 | #10 lock washer | 6 |
| 11 | 096994 | 10-24 x 3/4 pan hd mach screw | 2 |
| 12 | 123412-95 | Stator 230/460 Volts 3 ph | 1 |
| | 123412-96 | Stator 575 Volts 3ph | 1 |
| | 123411-56 | Stator 230 Volts 1 ph | 1 |
| 13 | | | |
| 14 | 072222 | Brake module | 1 |
| 15 | 123420 | spacer (brake module) | 2 |
| 16 | 099248-28 | #8-32 x 1 3/4 pan hd mach screw | 2 |
| 17 | 541003 | Fan End Bell | 1 |
| 18 | 123402 | Brake Disk | 1 |
| 19 | 081953 | #10-24 hex nut | 4 |
| 20 | 123417 | fan assembly | 1 |
| 21 | 539160 | shim washer (.002) | AR |
| | 539161 | shim washer (.005) | AR |
| | 539162 | shim washer (.010) | AR |
| 22 | 037846 | retaining ring | 1 |
| 23 | 541007 | Fan housing | 1 |
| 24 | 081932 | #10-24 hex cap nut | 4 |
| 25 | 123414 | Ball Bearing | 1 |
| 26 | 026587 | Woodruff Key | 1 |
| 27 | 123408 | Rotor and Shaft | 1 |
| 28 | 083419 | Bearing Cap | 1 |
| 29 | 123413 | Ball Bering | 1 |

| Index No. | Part No. | Description | Qty |
|-----------|-----------|----------------------------------|-----|
| 31 | 541351 | Retaining Ring | 1 |
| 32 | 123497-02 | Sud Kit | 1 |
| 33 | 088146 | Arbor End Bell | 1 |
| 34 | 070786-01 | Cover Plate | 1 |
| 35 | 099263-20 | #10-24 x 1 1/4 pan hd mach screw | 4 |
| 36 | 123419 | Tie Rod | 4 |
| 37 | | | |
| 38 | 123418 | Spring (brake) | 4 |
| 39 | 123406-01 | Brake Coil Assembly | 1 |
| 43 | 101820-01 | Arbor Collar (ground) | 2 |
| 44 | 081433 | Arbor Nut | 1 |
| 45 | 301020-02 | Arbor Wrench Flat | 1 |
| 46 | 203511 | Arbor Wrench Allen | 1 |
| 47 | 121319-71 | Connection Diagram 208/230/460 v | 1 |
| | 121318-71 | Connection Diagram 575 v | |
| | 123460-71 | Connection Diagram 220 v 1 phase | |
| 48 | 123403 | Fan Baffle | 1 |
| 49 | 123404 | Coil Housing | 1 |
| 50 | 121341 | Bumper (peel & stick) | 3 |

Single phase only below line (motor # 123424-00)

| | | | |
|----|-----------|--------------------------------|---|
| 52 | 068595-03 | Relay | 1 |
| 53 | 099249-05 | #10-24 x 3/8 pan hd mach screw | 1 |
| 54 | 099361-10 | #10 flat washer | 1 |
| 55 | 000417 | #10 lock washer | 1 |
| 57 | 083382-05 | Capacitor | 1 |

Parts not shown ss wire connector for motor leads
(081733 & 081730)

Industrial Use Warranty Information

Your new Original Radial Arm Saw is precision manufactured under strict quality standards. In the unlikely event there is trouble with your machine, the Original Saw Company warrants the machine for the period of one year from the date of purchase. The warranty covers defects in materials and workmanship. We will cover the cost of the defective part and ground shipping. If a replacement part is sent under warranty the defective part must be returned to Original Saw Company or you will be charged for the replacement. The part must also be accompanied by a return goods authorization number. This number can be obtained by calling customer service at 1-800-733-4063. When the part is returned it may be repaired or replaced at our discretion. The part must be shipped prepaid to: The Original Saw Company, Attn. Warranty Replacement Counter, 465 Third Avenue SE, Britt, Iowa 50423.

IMPORTANT

IMPORTANT

IMPORTANT

To assure product reliability, repairs, maintenance and adjustments should be performed by Authorized Service Centers, always using genuine replacement parts.

For parts or service please contact Original Saw for the dealer nearest you.



465 Third Ave SE
P.O. Box 331
Britt, IA 50423
PH 800/733-4063 641-843-3868
FX 641 / 843-3869
E-mail customerservice@originalsaw.com
www.originalsaw.com